

# Operation PLANCTON

avec les Amis du Marche-Avec et Cap vers la Nature



19 septembre 2015 - Point 7

# Observation du plancton – point 7 – 14h

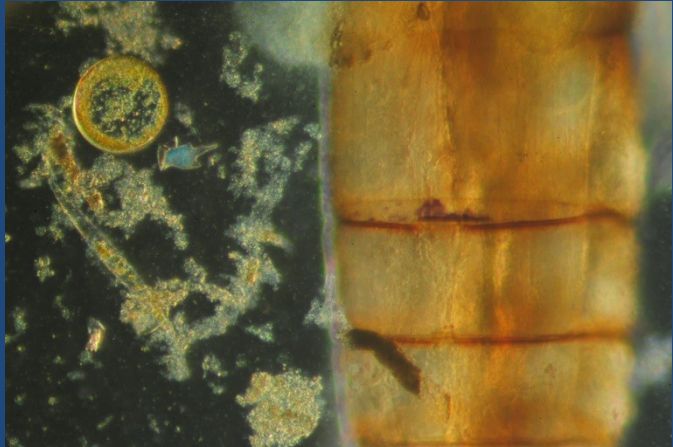
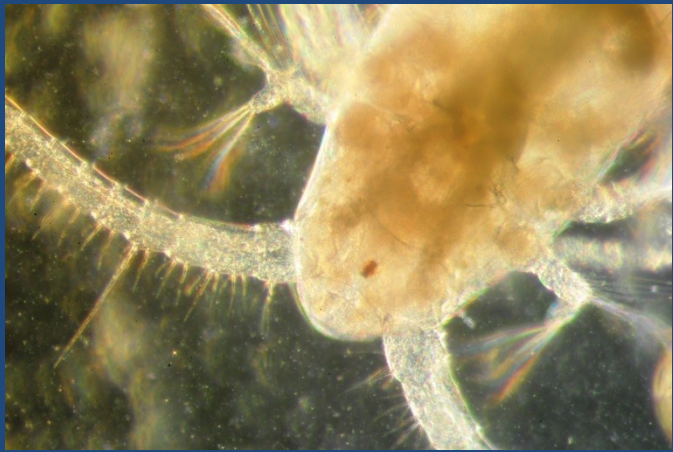
## Quelques genres et espèces

### PHYTOPLANCTON

- *Coscinodiscus sp.*
- *Dinophysis tripos*
- *Thalassiosira sp.*
- *Protoperedinium depressus*
- *Halosphaera sp.*
- *Rhizosolenia spp.*
- *Gyrosigma sp.*
- *Ceratium spp.*
- *Chaetoceros spp.*
- *Dictyocha fibula*
- *Odontella sinensis*
- *Thalassionema nitzschioides*
- Etc...

### ZOOPLANCTON

- *Evadne sp.*
- Copépodes adultes et nauplii différentes espèces :
  - pélagiques notamment : *Calanus sp.*, *Acartia sp.*,
  - benthiques avec *Euterpina sp.* ...
- Daphnie marine
- Larves bivalves stade umbo
- Larves gastéropodes
- *Sagitta sp.*
- Larve cypris de balane
- *Obelia sp.*
- Larves de bryozoaires
- Etc...



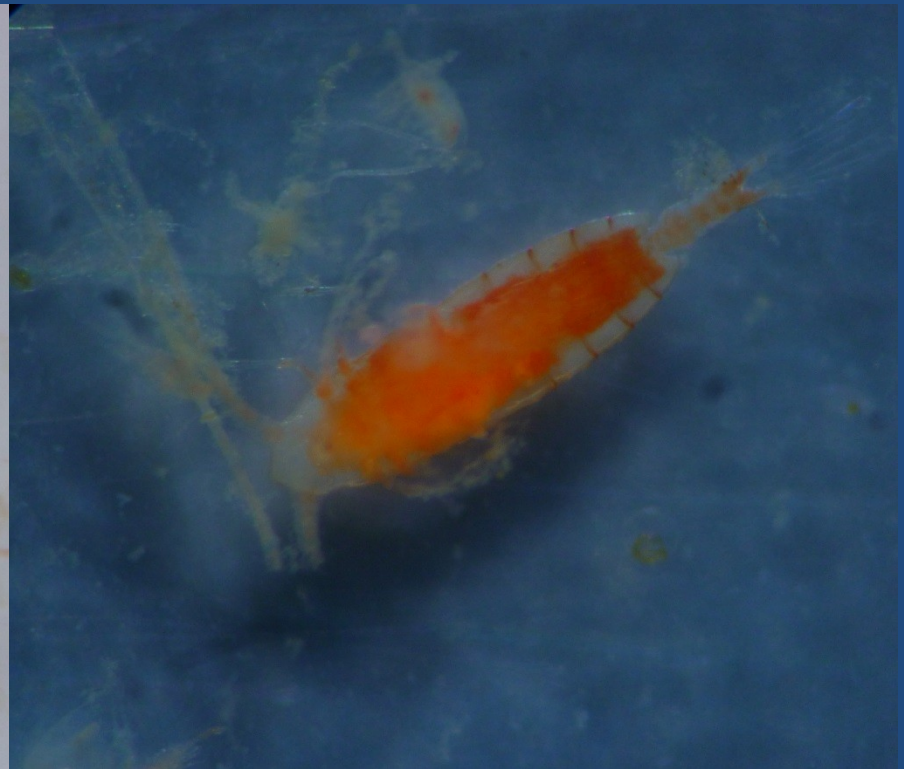
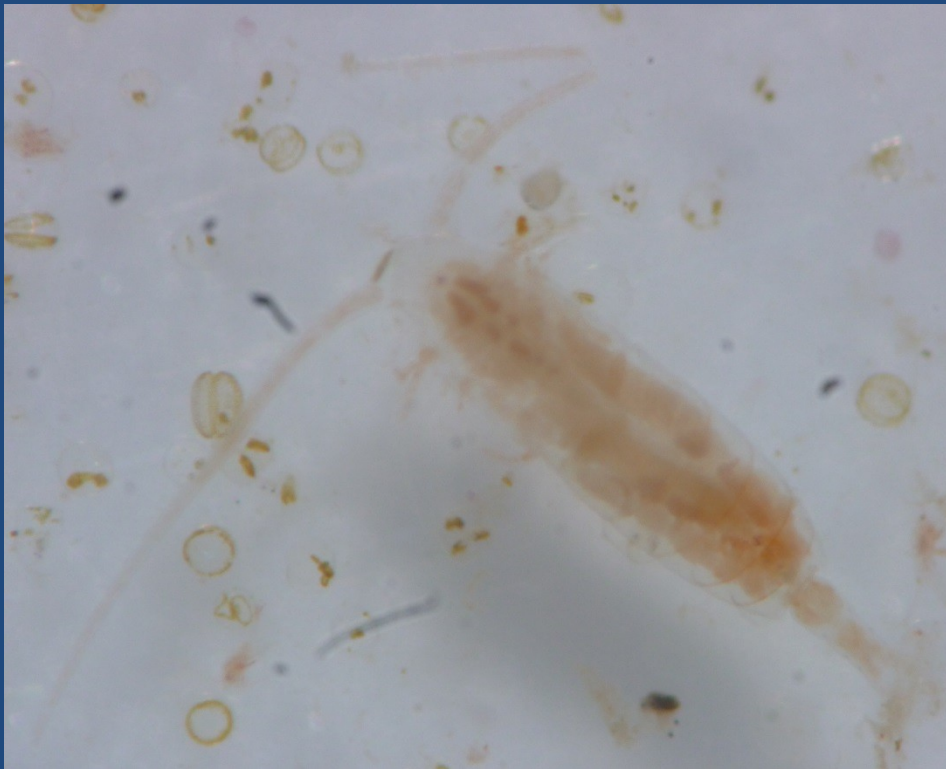
## Copépole

crustacé planctonique appartenant au zooplancton permanent (sera plancton toute sa vie !), c'est la proie favorite des sardines et des alevins de poisson

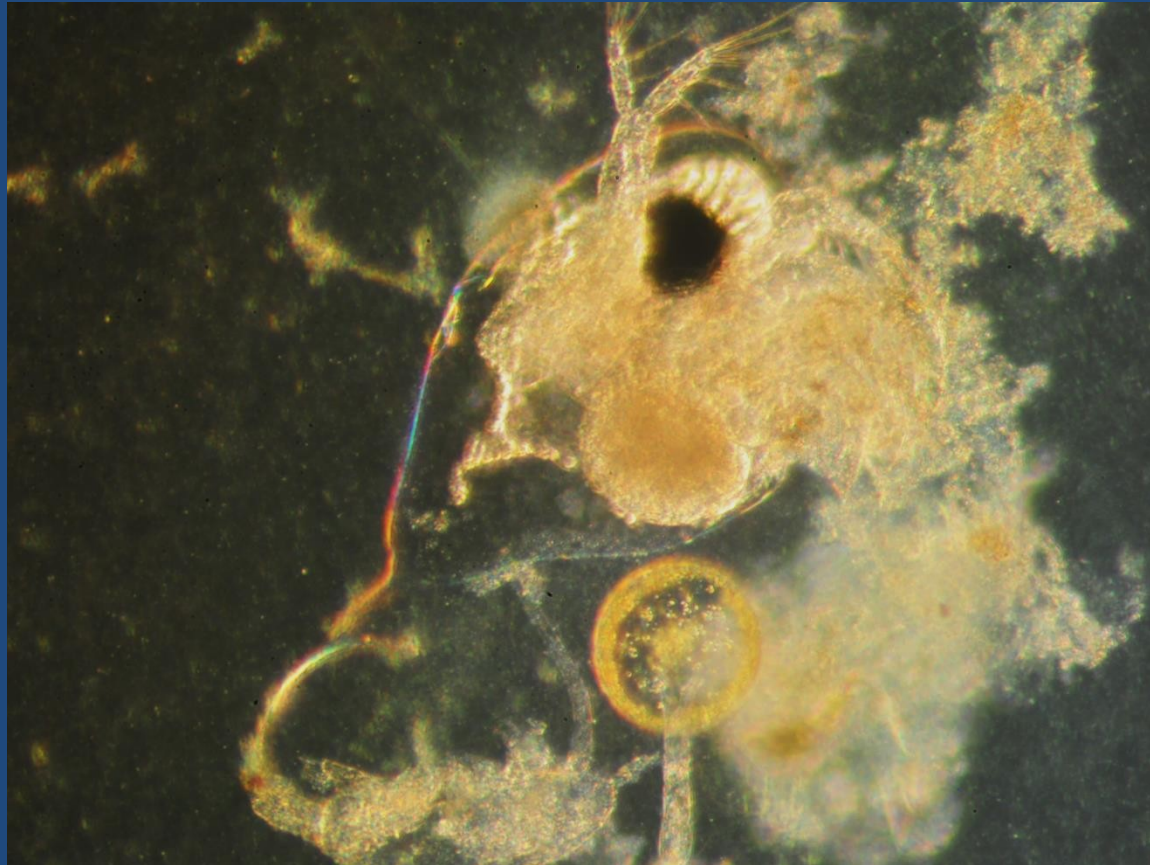


## Copépode

Crustacé - zooplancton  
permanent



**Copépodes vus à la loupe (on voit les diatomées au second plan, image 1)**



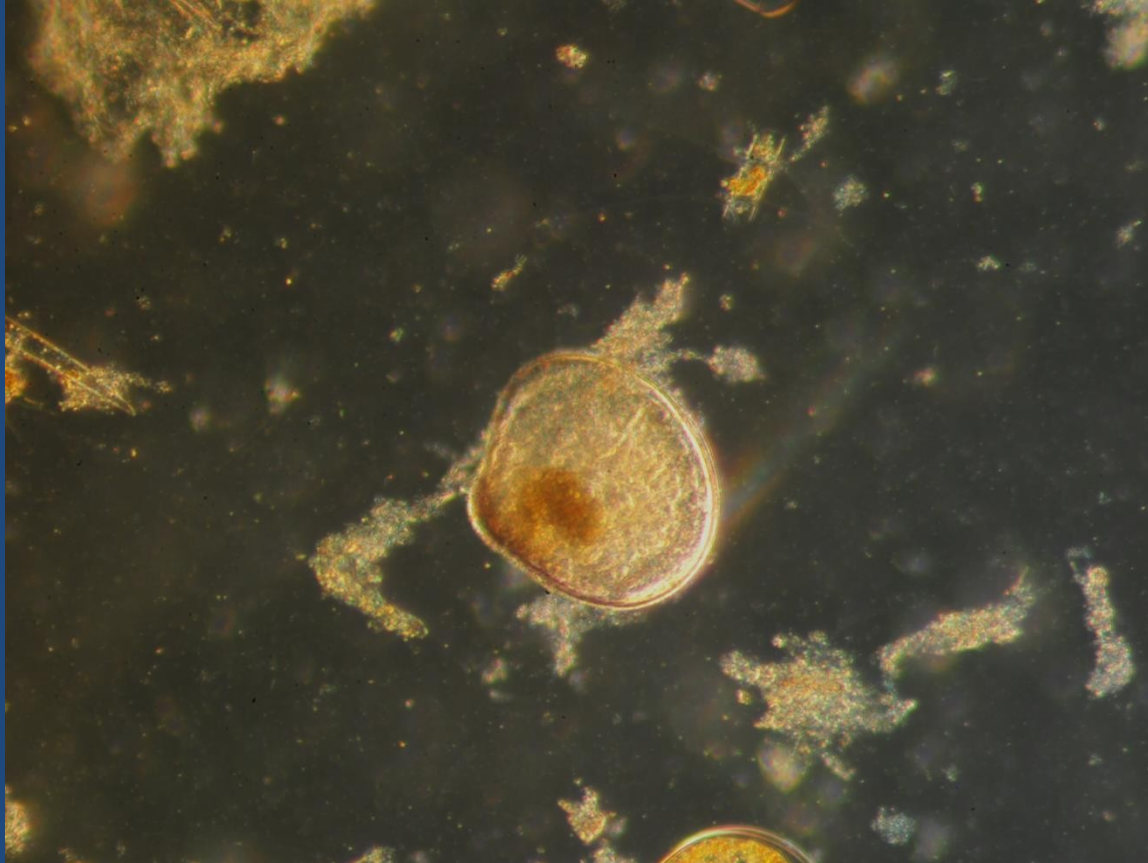
***Evadne sp.* (Cladocère)**

Crustacé - zooplancton permanent



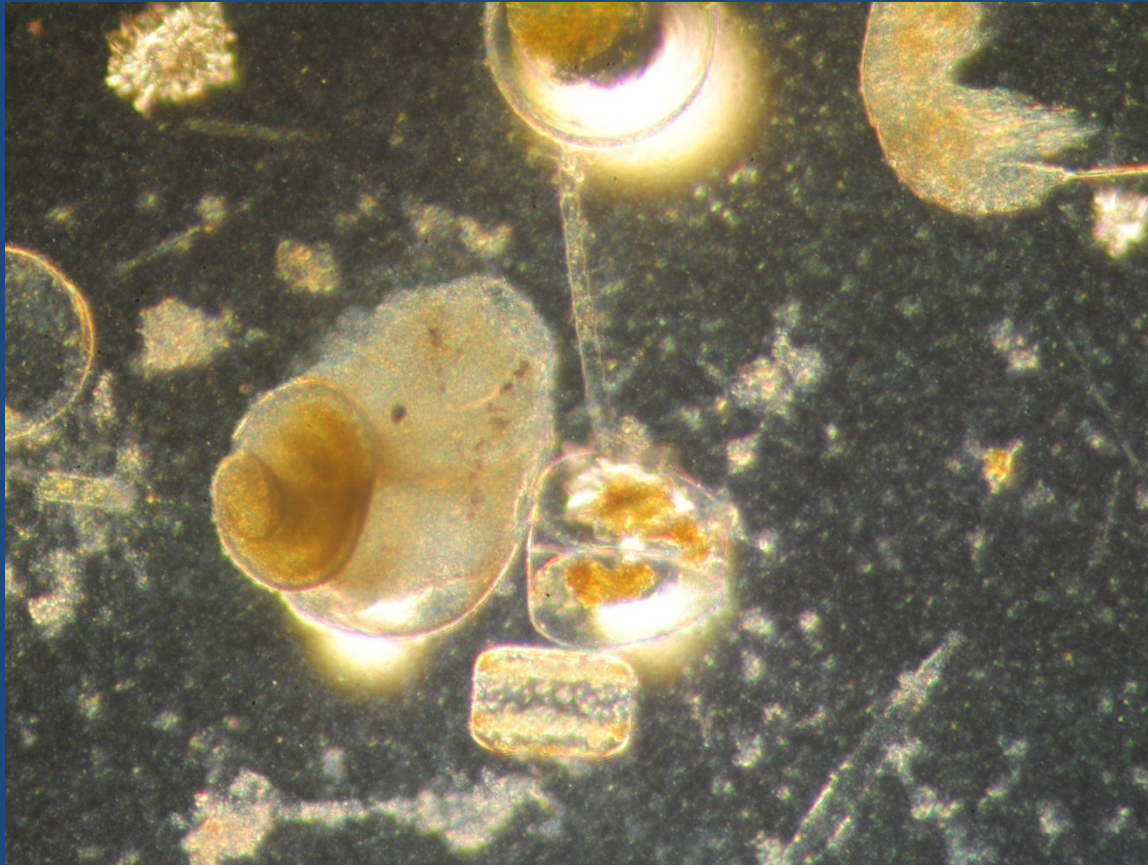
*Sagitta* sp. (Phylum of  
Chaetognathes)

zooplankton permanent

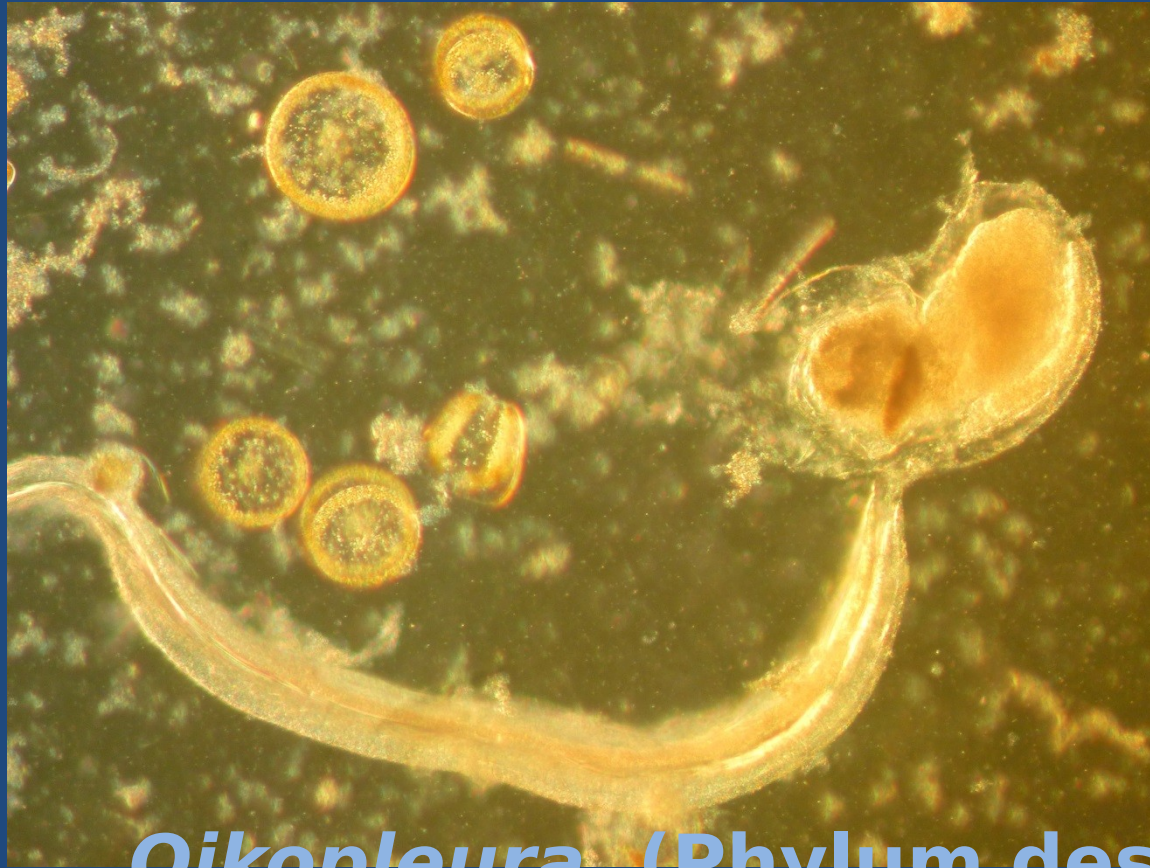


**Larve de coquillage bivalve**



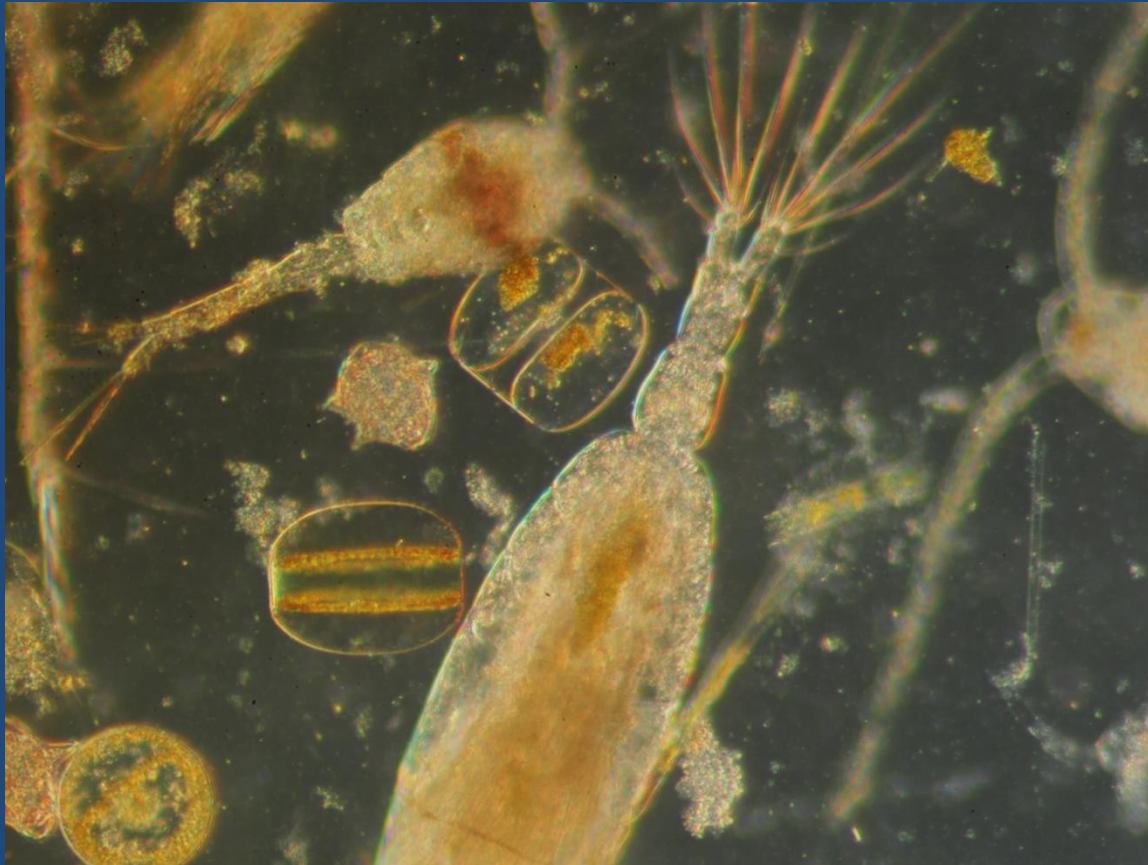


## Larve de gastéropode

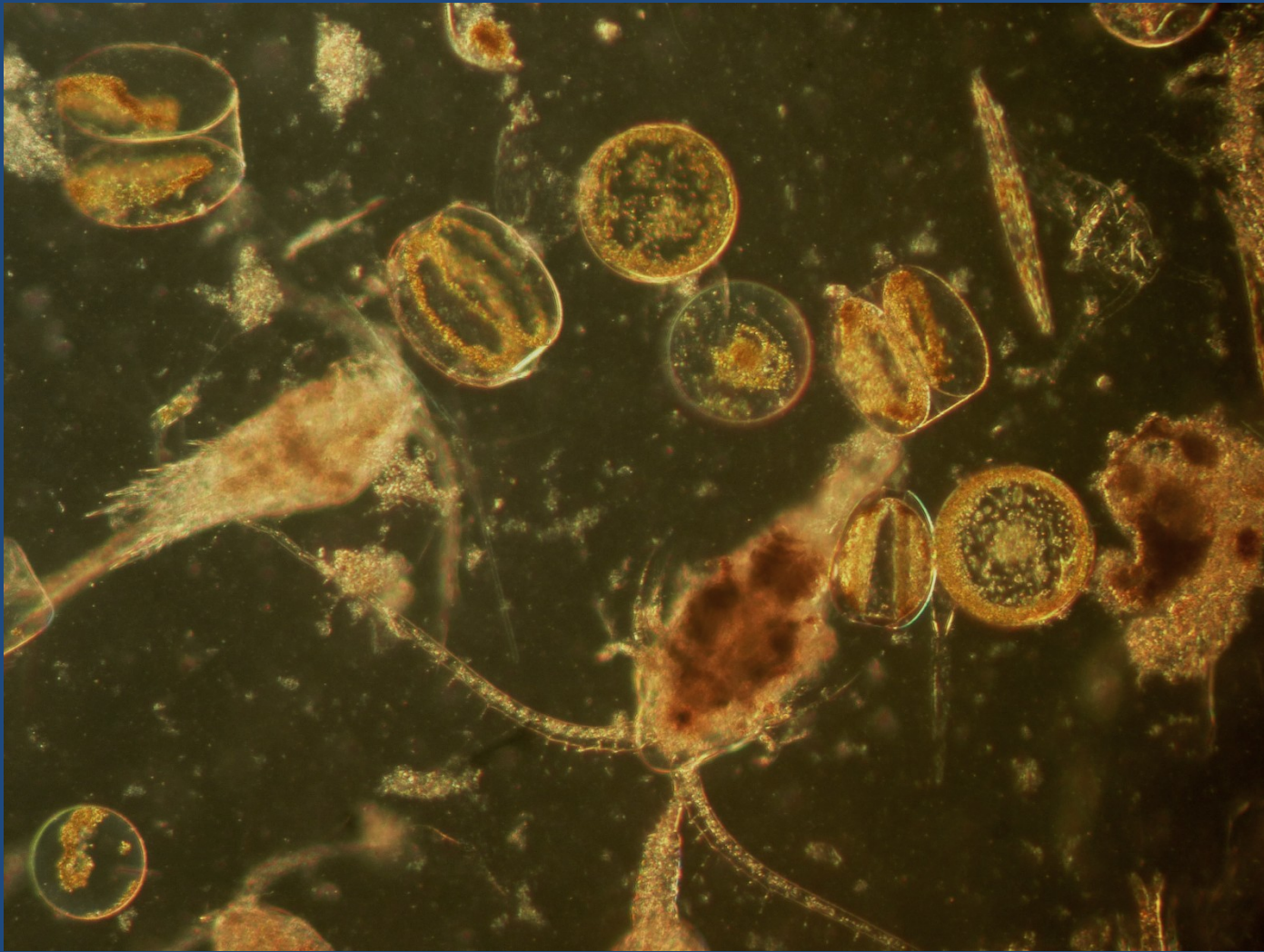


***Oikopleura* (Phylum des  
Chordés)**

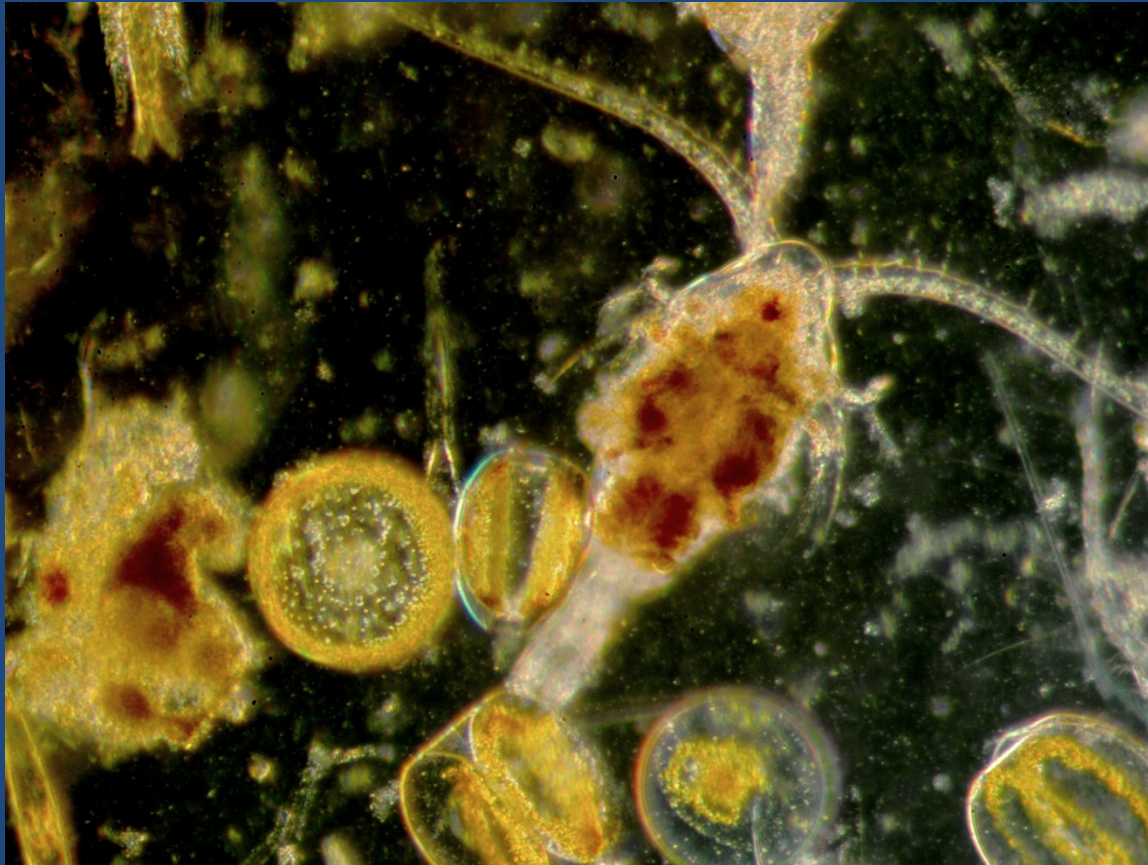
zooplancton permanent



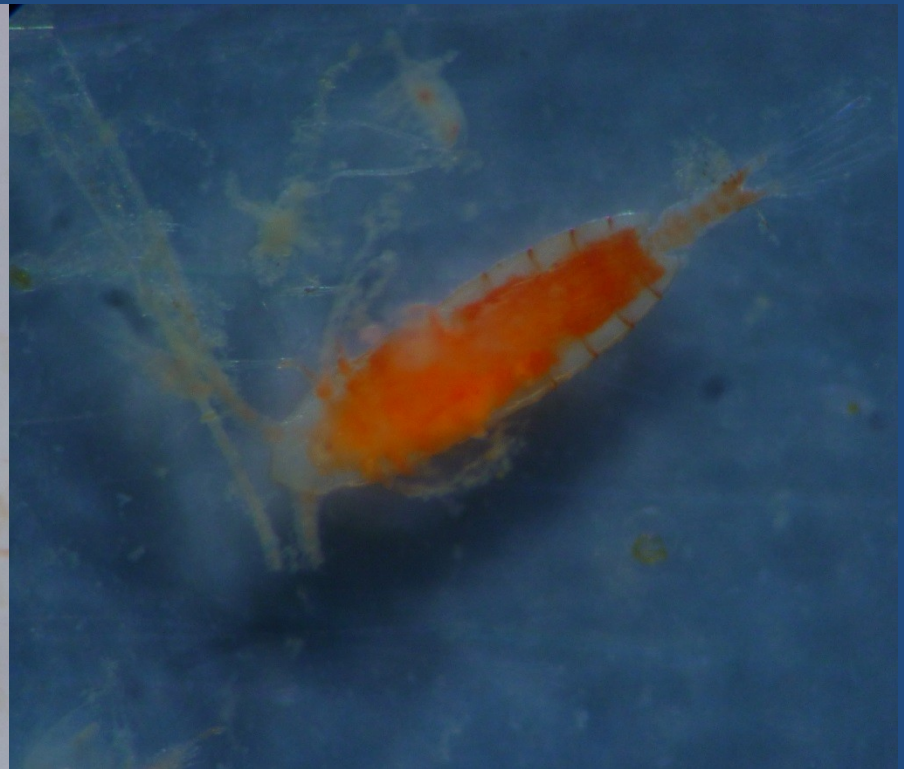
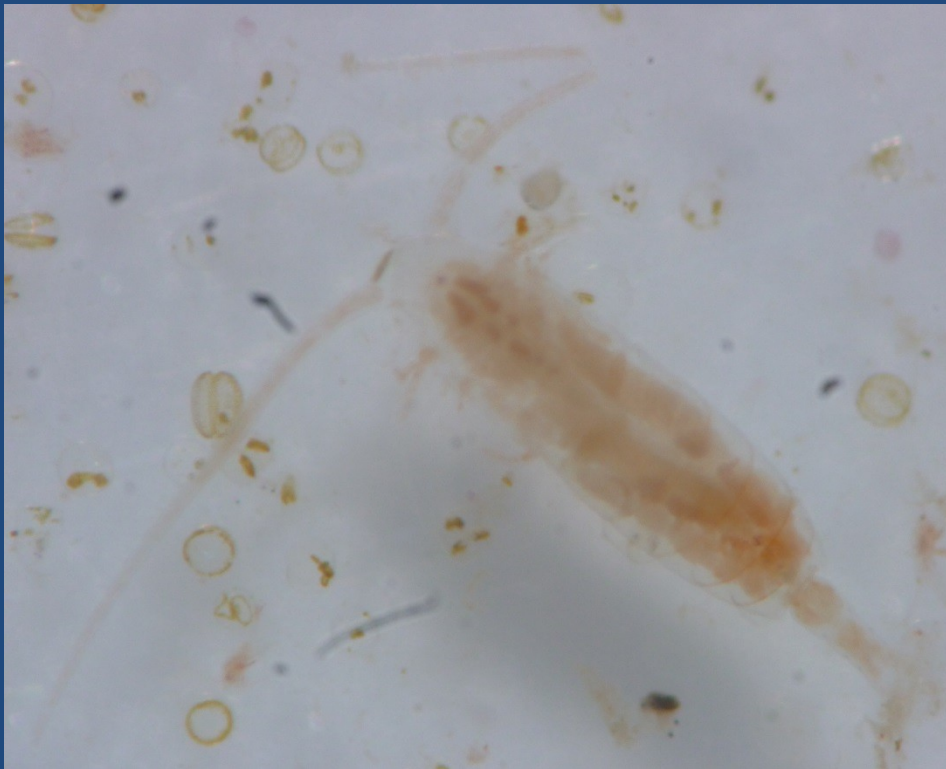
# Zooplankton et phytoplancton



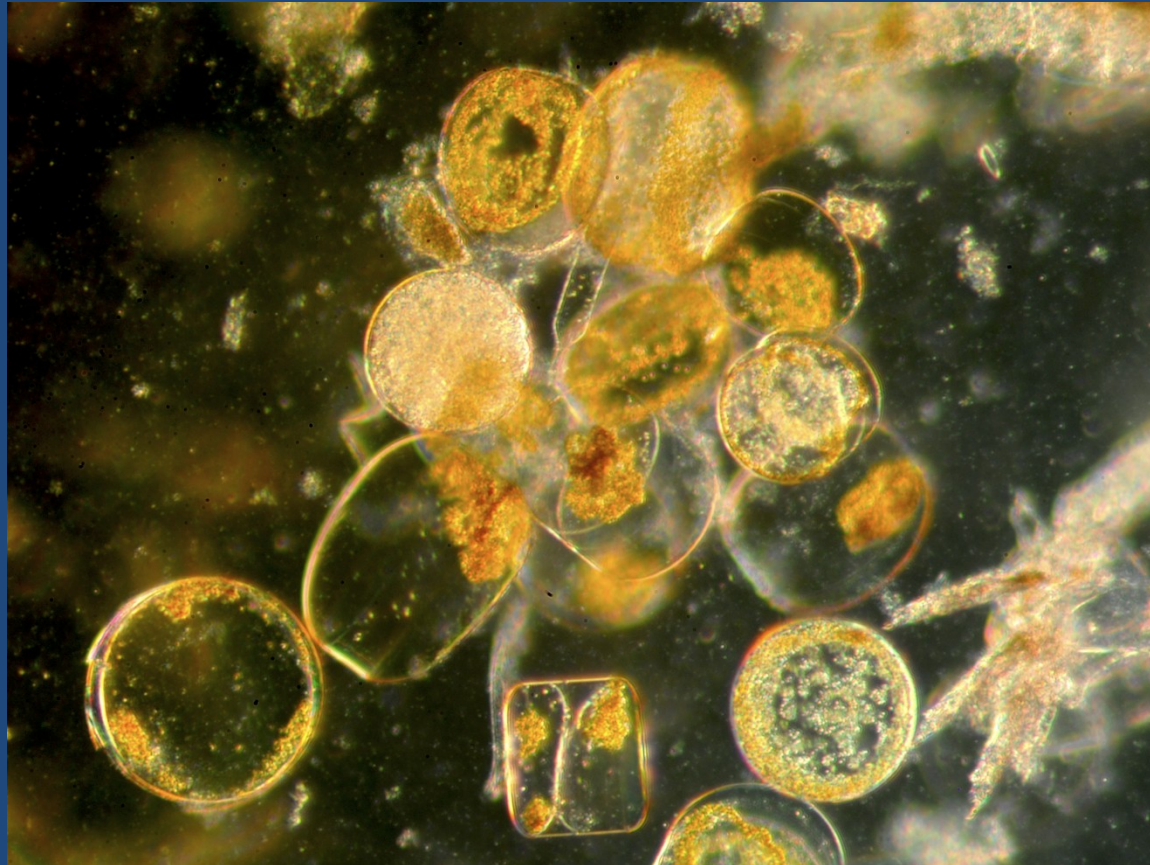
# Zooplankton et phytoplankton



# Zooplankton et phytoplankton



**Copépodes vus à la loupe (on voit les diatomées au second plan, image 1)**

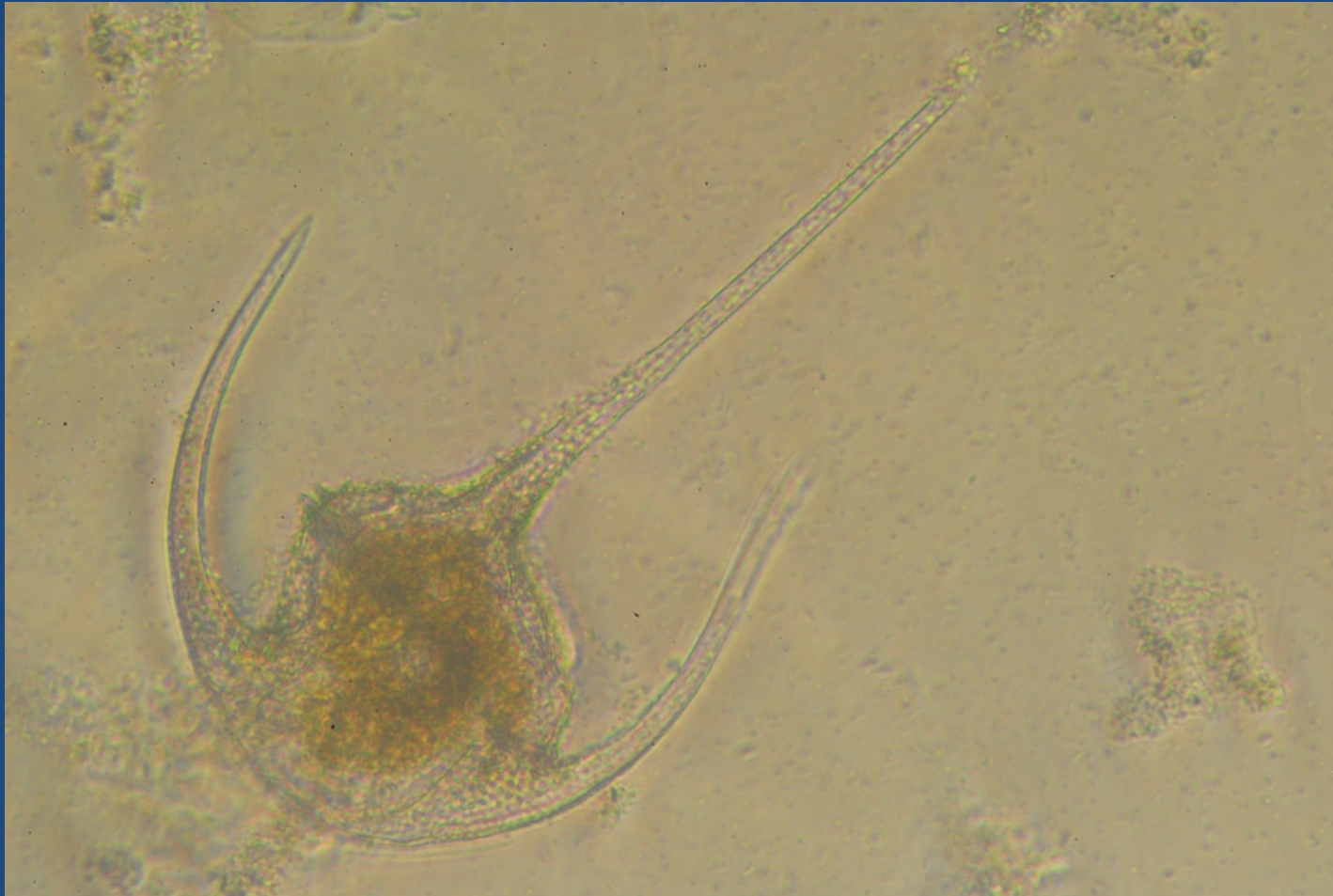


## Diatomées automnales



**Diatomées *Coscinodiscus sp.***  
phytoplancton : groupe le plus important  
en climat tempéré





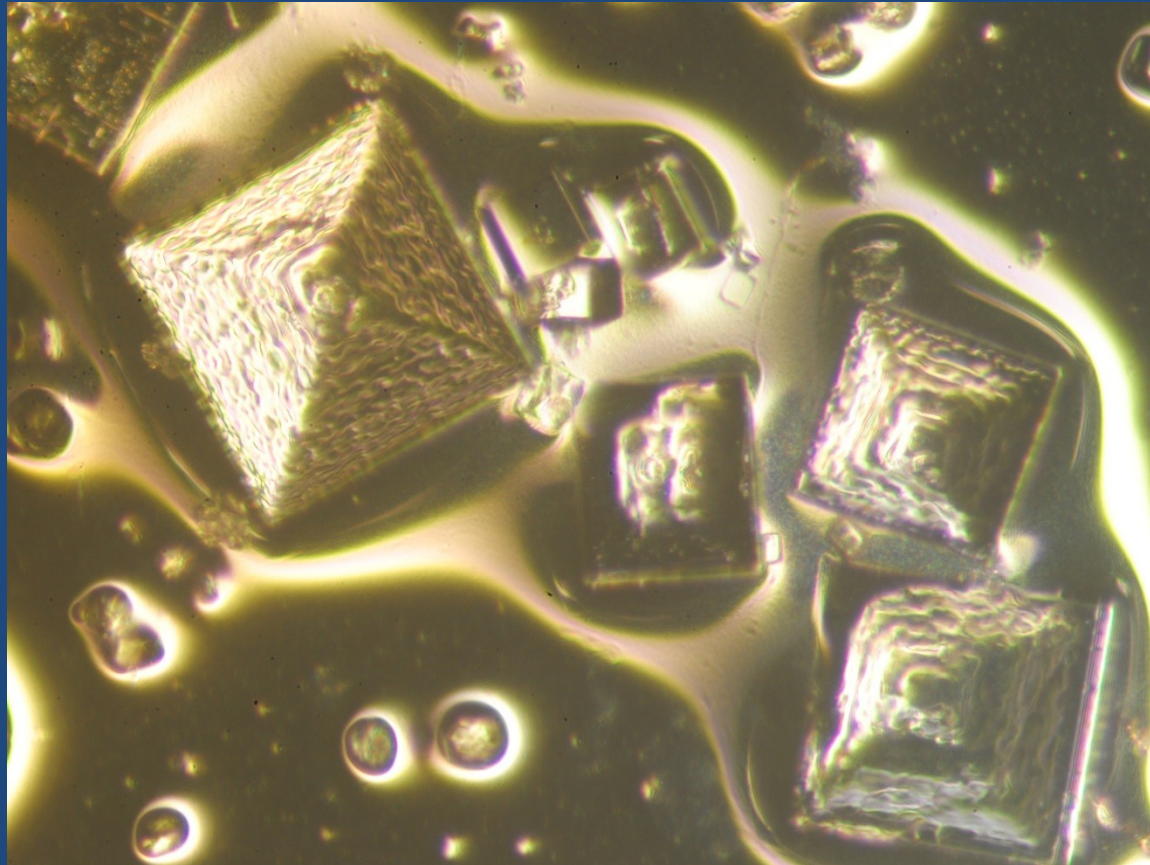
Dinoflagellé *Ceratium*  
*sp.*



Photo H. Laguerre

## **Dinoflagellé *Dinophysis sp.***

Phytoplancton toxique produisant des  
toxines diarrhéiques



**Cristaux de sel vus au  
microscope**